

TESTE ANGOLARI DISASSATE

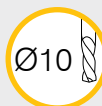
OFF-SET ANGLE HEADS





TESTE ANGOLARI DISASSATE OFF-SET ANGLE HEADS

FORATURA
DRILLING



MASCHIATURA
TAPPING



SPECIFICHE TECNICHE TECHNICAL FEATURES

Modello *Type* AO16-SK40-S195 Codice *Code* 1249167.100

Modello *Type* AO16-BT40-S201 Codice *Code* 1249168.100

Modello *Type* AO16-CAT40-S195 Codice *Code* 1249169.100

Modello *Type* AO16-HSK63-S202 Codice *Code* 1249170.100

Mandrino porta-utensile per pinza *Tool-holder for collet* **ER 16**

Rotazione cono *Input shank rotation* SX / LH

Rotazione mandrino *Output spindle rotation* DX / RH

Rapporto di trasmissione *Transmission ratio* 1:1

Velocità max *Max speed* 6000 rpm

Coppia *Torque* 23 Nm @ 500 rpm

Carico assiale max *Max axial load* 230 N

Peso *Weight* 6.5 Kg

Lubrificazione a grasso *Grease lubricated* Klüber Isoflex NBU 15

OPZIONI OPTIONS

Pinza ER16 DIN 6499/B *ER16 collet DIN 6499/B* 411216.100

Pinza di maschiatura ET-1-16 con compensazione 401216.200

Tapping collet ET-1-16 with compensation

Pinza di maschiatura ER16 con quadro 411216.200

Tapping collet ER16 with square

Mandrino Weldon *Weldon spindle type*

Perno antirotante interasse 80 mm

Stop-bar pin pitch 80 mm

DOTAZIONE STANDARD STANDARD EQUIPMENT

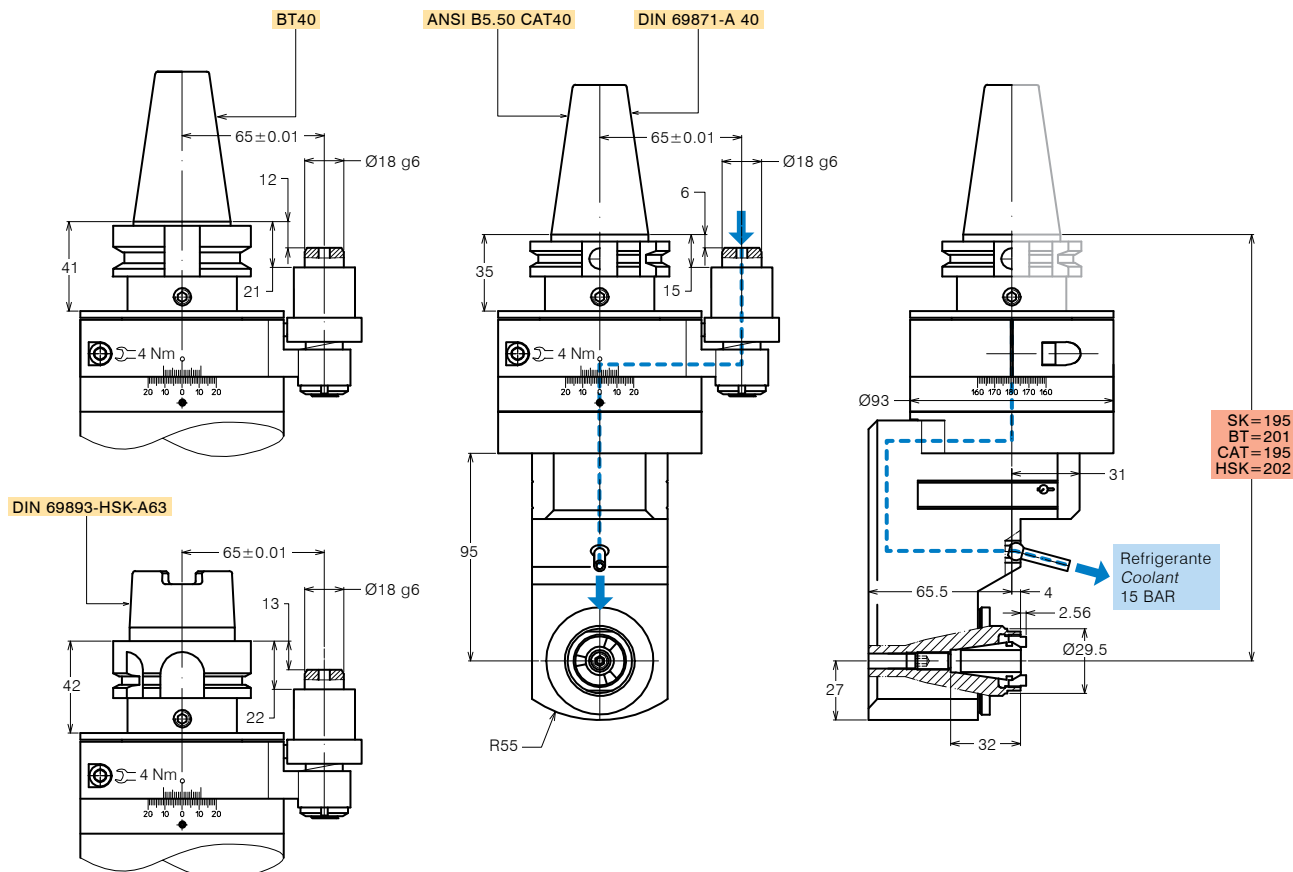
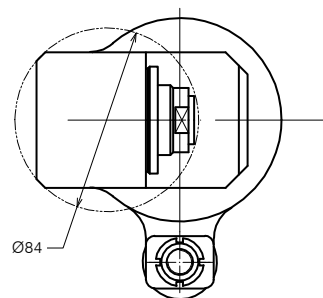
Stop-block standard *Standard stop-block* 311201.025

Ghiera ER *ER nut*

Chiave *Clamping wrench*

Tubetto di grasso *Grease tube*

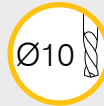
Bauletto *Storage case*





TESTE ANGOLARI DISASSATE OFF-SET ANGLE HEADS

FORATURA
DRILLING



MASCHIATURA
TAPPING



SPECIFICHE TECNICHE TECHNICAL FEATURES

Modello *Type* AO16R-SK40-S195 Codice *Code* 1249171.100

Modello *Type* AO16R-BT40-S201 Codice *Code* 1249172.100

Modello *Type* AO16R-CAT40-S195 Codice *Code* 1249173.100

Modello *Type* AO16R-HSK63-S202 Codice *Code* 1249174.100

Mandrino porta-utensile per pinza *Tool-holder for collet* **ER 16**

Rotazione cono *Input shank rotation* SX / LH

Rotazione mandrino *Output spindle rotation* DX / RH

Rapporto di trasmissione *Transmission ratio* 1:1

Velocità max *Max speed* 6000 rpm

Coppia *Torque* 23 Nm @ 500 rpm

Carico assiale max *Max axial load* 230 N

Peso *Weight* 6.5 Kg

Lubrificazione a grasso *Grease lubricated* Klüber Isoflex NBU 15

OPZIONI OPTIONS

Pinza ER16 DIN 6499/B *ER16 collet DIN 6499/B* 411216.100

Pinza di maschiatura ET-1-16 con compensazione 401216.200

Tapping collet ET-1-16 with compensation

Pinza di maschiatura ER16 con quadro 411216.200

Tapping collet ER16 with square

Mandrino Weldon *Weldon spindle type*

Perno antirotante interasse 80 mm

Stop-bar pin pitch 80 mm

DOTAZIONE STANDARD STANDARD EQUIPMENT

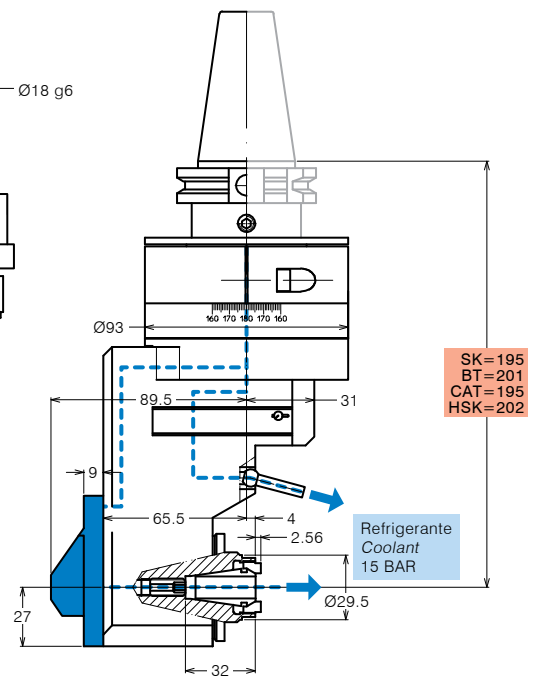
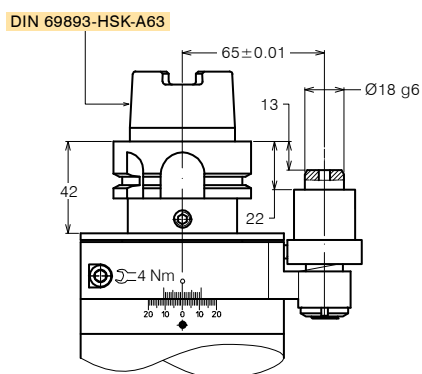
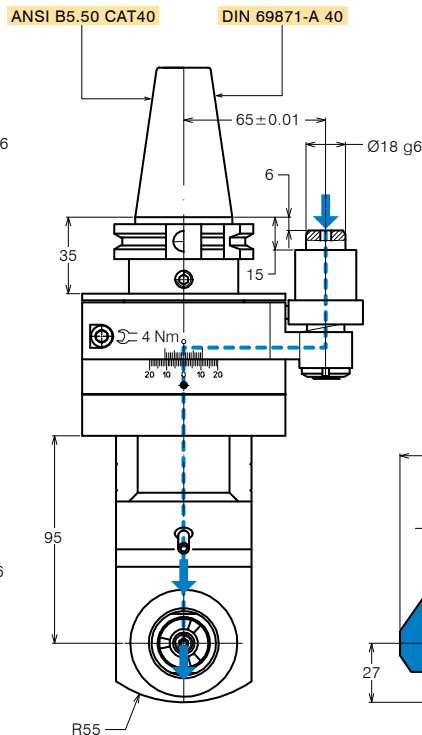
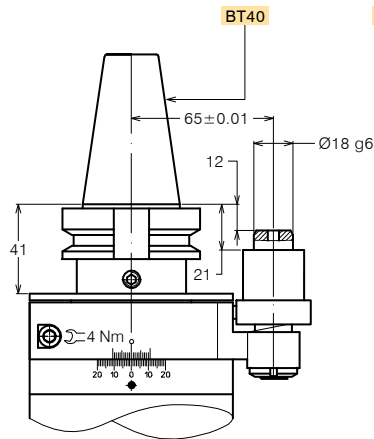
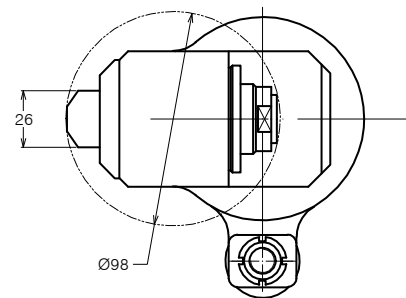
Stop-block standard *Standard stop-block* 311201.025

Ghiera ER *ER nut*

Chiave *Clamping wrench*

Tubetto di grasso *Grease tube*

Bauletto *Storage case*



SK=195
BT=201
CAT=195
HSK=202



TESTE ANGOLARI DISASSATE OFF-SET ANGLE HEADS

FORATURA
DRILLING



MASCHIATURA
TAPPING



REFRIGERANTE
COOLANT



SPECIFICHE TECNICHE TECHNICAL FEATURES

Modello *Type* AO16R-SK40-S210 Codice *Code* 1249183.100

Modello *Type* AO16R-BT40-S216 Codice *Code* 1249184.100

Modello *Type* AO16R-CAT40-S210 Codice *Code* 1249185.100

Modello *Type* AO16R-HSK63-S217 Codice *Code* 1249186.100

Mandrino porta-utensile per pinza *Tool-holder for collet* **ER 16**

Rotazione cono *Input shank rotation* DX / RH

Rotazione mandrino *Output spindle rotation* DX / RH

Rapporto di trasmissione *Transmission ratio* 1:1

Velocità max *Max speed* 5000 rpm

Coppia *Torque* 25 Nm @ 500 rpm

Peso *Weight* 6 Kg

Lubrificazione a grasso *Grease lubricated* Klüber Isoflex NBU 15

OPZIONI OPTIONS

Pinza ER16 DIN 6499/B *ER16 collet DIN 6499/B* 411216.100

Pinza di maschiatura ET-1-16 con compensazione 401216.200

Tapping collet ET-1-16 with compensation

Pinza di maschiatura ER16 con quadro 411216.200

Tapping collet ER16 with square

Mandrino Weldon *Weldon spindle type*

Perno antirotante interasse 80 mm

Stop-bar pin pitch 80 mm

DOTAZIONE STANDARD STANDARD EQUIPMENT

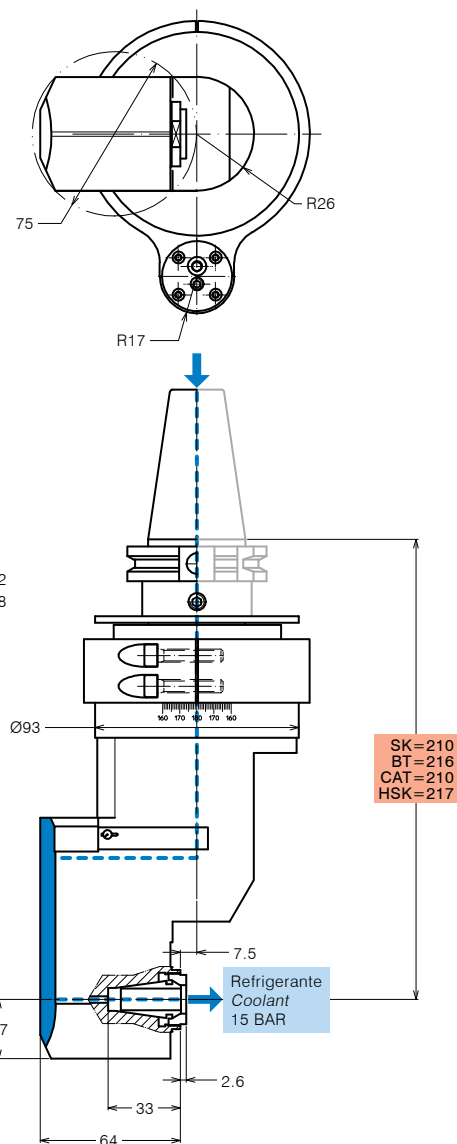
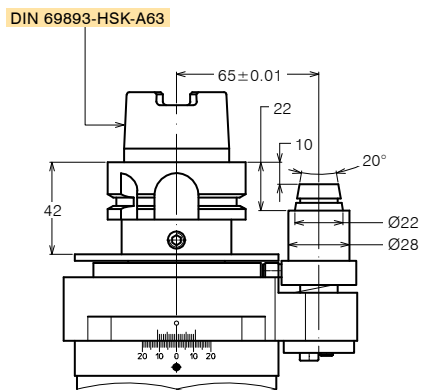
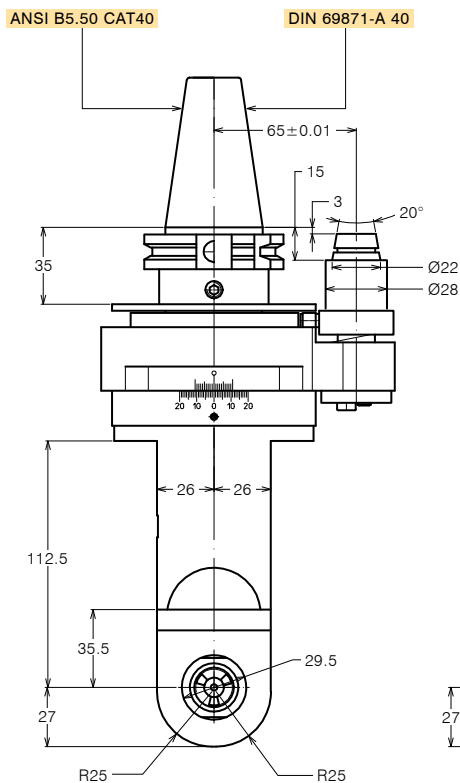
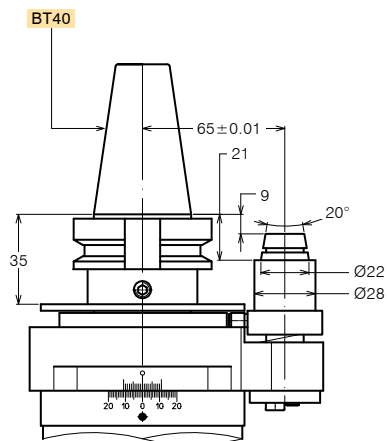
Stop-block standard *Standard stop-block* 311201.025

Ghiera ER *ER nut*

Chiave *Clamping wrench*

Tubetto di grasso *Grease tube*

Bauletto *Storage case*



SK=210
BT=216
CAT=210
HSK=217

Refrigerante
Coolant
15 BAR



TESTE ANGOLARI DISASSATE OFF-SET ANGLE HEADS

FORATURA
DRILLING



MASCHIATURA
TAPPING



REFRIGERANTE
COOLANT

IC

SPECIFICHE TECNICHE TECHNICAL FEATURES

Modello *Type* AO16R-SK40-S280 Codice *Code* 1249187.100

Modello *Type* AO16R-BT40-S286 Codice *Code* 1249188.100

Modello *Type* AO16R-CAT40-S280 Codice *Code* 1249189.100

Modello *Type* AO16R-HSK63-S287 Codice *Code* 1249190.100

Mandrino porta-utensile per pinza *Tool-holder for collet* **ER 16**

Rotazione cono *Input shank rotation* DX / RH

Rotazione mandrino *Output spindle rotation* DX / RH

Rapporto di trasmissione *Transmission ratio* 1:1

Velocità max *Max speed* 5000 rpm

Coppia *Torque* 25 Nm @ 500 rpm

Peso *Weight* 6 Kg

Lubrificazione a grasso *Grease lubricated* Klüber Isoflex NBU 15

OPZIONI OPTIONS

Pinza ER16 DIN 6499/B *ER16 collet DIN 6499/B* 411216.100

Pinza di maschiatura ET-1-16 con compensazione 401216.200

Tapping collet ET-1-16 with compensation

Pinza di maschiatura ER16 con quadro 411216.200

Tapping collet ER16 with square

Mandrino Weldon *Weldon spindle type*

Perno antirotante interasse 80 mm

Stop-bar pin pitch 80 mm

DOTAZIONE STANDARD STANDARD EQUIPMENT

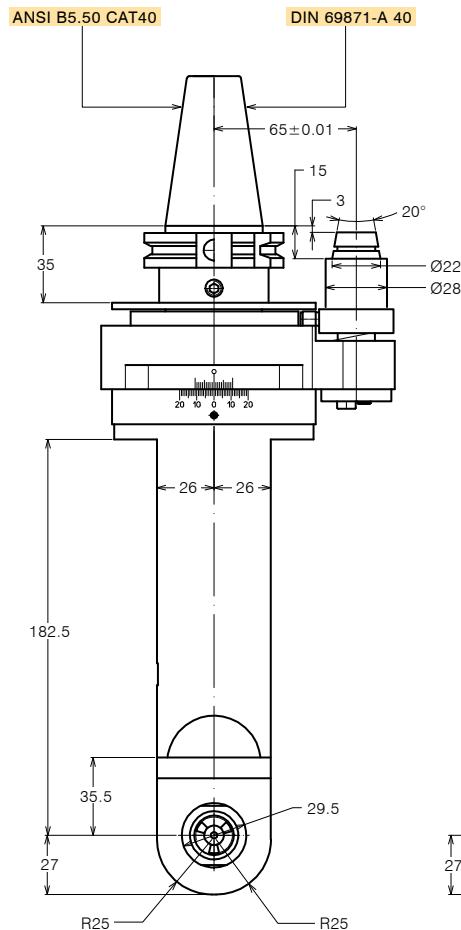
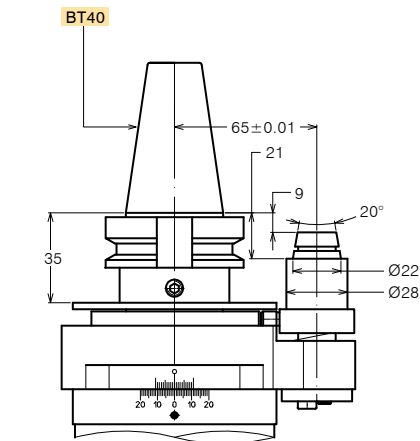
Stop-block standard *Standard stop-block* 311201.025

Ghiera ER *ER nut*

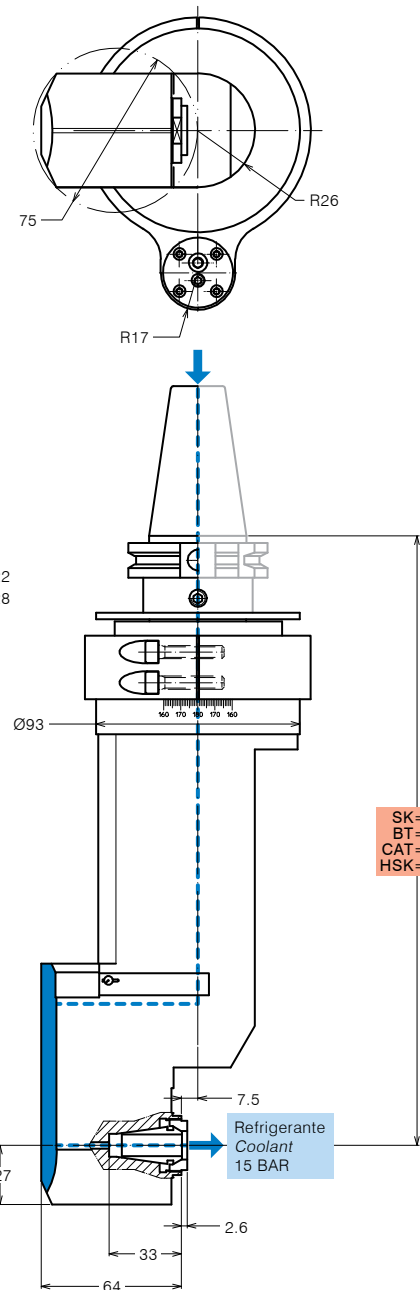
Chiave *Clamping wrench*

Tubetto di grasso *Grease tube*

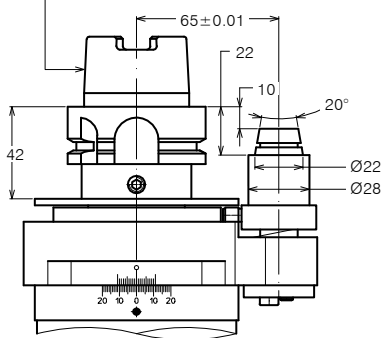
Bauletto *Storage case*



DIN 69871-A 40



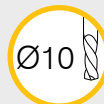
DIN 69893-HSK-A63





TESTE ANGOLARI DISASSATE OFF-SET ANGLE HEADS

FORATURA
DRILLING



MASCHIATURA
TAPPING



SPECIFICHE TECNICHE TECHNICAL FEATURES

Modello *Type* AOW10-SK40 Codice *Code* 1249135.100

Modello *Type* AOW10-BT40 Codice *Code* 1249136.100

Modello *Type* AOW10-CAT40 Codice *Code* 1249137.100

Modello *Type* AOW10-HSK63 Codice *Code* 1249138.100

Mandrino porta-utensile per pinza *Tool-holder for collet* **Weldon Ø10**

Rotazione cono *Input shank rotation* DX / RH

Rotazione mandrino *Output spindle rotation* DX / RH

Rapporto di trasmissione *Transmission ratio* 1:1

Velocità max *Max speed* 8000 rpm

Coppia *Torque* 28 Nm

Carico assiale max *Max axial load* 230 N

Peso *Weight* 6 Kg

Lubrificazione a grasso *Grease lubricated* Klüber Isoflex NBU 15

OPZIONI OPTIONS

Perno antirotante interasse 80 mm

Stop-bar pin pitch 80 mm

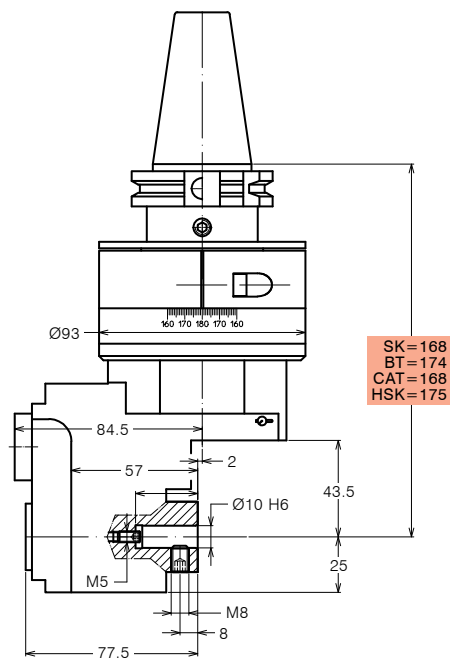
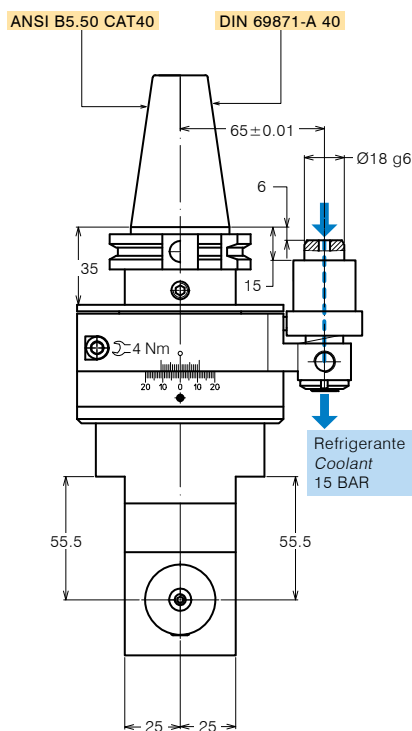
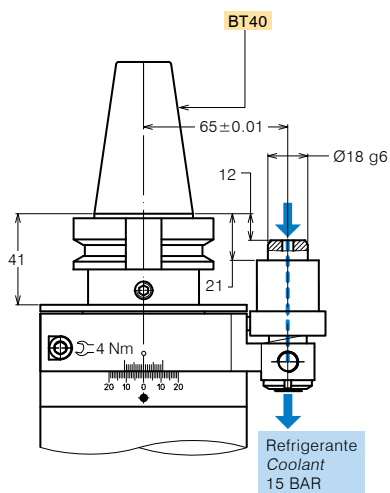
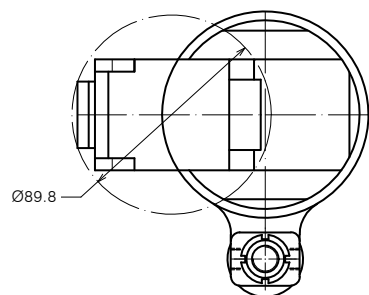
DOTAZIONE STANDARD STANDARD EQUIPMENT

Stop-block standard *Standard stop-block* 311201.025

Chiave *Clamping wrench*

Tubetto di grasso *Grease tube*

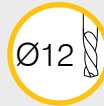
Bauletto *Storage case*





TESTE ANGOLARI DISASSATE OFF-SET ANGLE HEADS

FORATURA
DRILLING



MASCHIATURA
TAPPING



SPECIFICHE TECNICHE TECHNICAL FEATURES

Modello *Type* AOW12-SK40 Codice *Code* 1249139.100

Modello *Type* AOW12-BT40 Codice *Code* 1249140.100

Modello *Type* AOW12-CAT40 Codice *Code* 1249141.100

Modello *Type* AOW12-HSK63 Codice *Code* 1249142.100

Mandrino porta-utensile per pinza *Tool-holder for collet* **Weldon Ø12**
 Rotazione cono *Input shank rotation* SX / LH
 Rotazione mandrino *Output spindle rotation* DX / RH
 Rapporto di trasmissione *Transmission ratio* 1:1
 Velocità max *Max speed* 7000 rpm
 Coppia *Torque* 32 Nm
 Peso *Weight* 6 Kg
 Lubrificazione a grasso *Grease lubricated* Klüber Isoflex NBU 15

OPZIONI OPTIONS

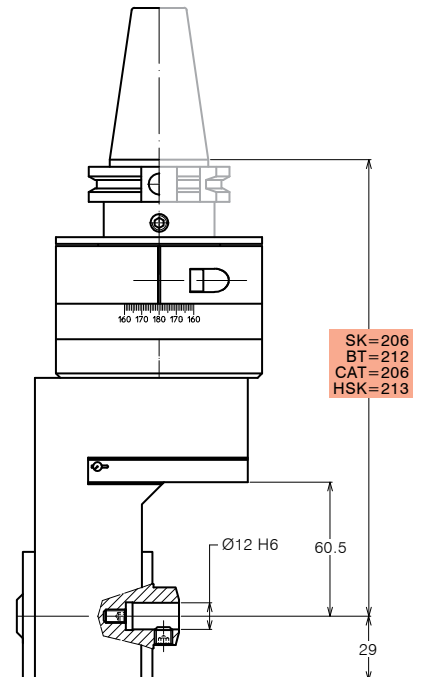
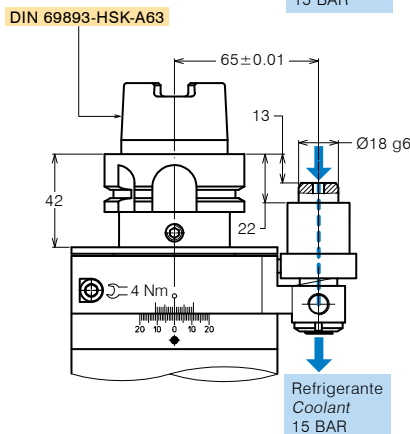
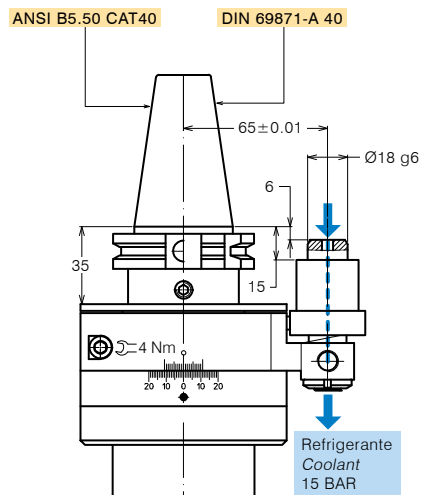
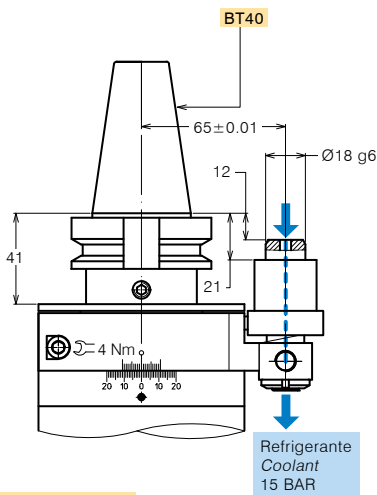
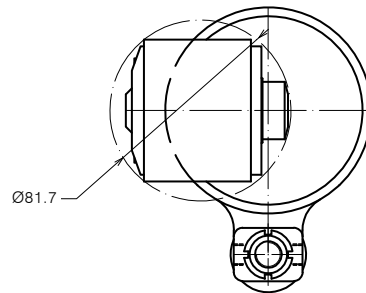
Perno antirotante interasse 80 mm
Stop-bar pin pitch 80 mm

DOTAZIONE STANDARD STANDARD EQUIPMENT

Stop-block standard *Standard stop-block* 311201.025

Tubetto di grasso *Grease tube*

Bauletto *Storage case*





TESTE ANGOLARI DISASSATE OFF-SET ANGLE HEADS

FORATURA
DRILLING



MASCHIATURA
TAPPING



SPECIFICHE TECNICHE TECHNICAL FEATURES

Modello *Type* AOW12-SK40-E290 Codice *Code* 1249139.100-E290

Modello *Type* AOW12-BT40-E296 Codice *Code* 1249140.100-E296

Modello *Type* AOW12-CAT40-E290 Codice *Code* 1249141.100-E290

Modello *Type* AOW12-HSK63-E297 Codice *Code* 1249142.100-E299

Mandrino porta-utensile per pinza *Tool-holder for collet* **Weldon Ø12**

Rotazione cono *Input shank rotation* SX / LH

Rotazione mandrino *Output spindle rotation* DX / RH

Rapporto di trasmissione *Transmission ratio* 1:1

Velocità max *Max speed* 7000 rpm

Coppia *Torque* 32 Nm

Peso *Weight* 6 Kg

Lubrificazione a grasso *Grease lubricated* Klüber Isoflex NBU 15

OPZIONI OPTIONS

Perno antirotante interasse 80 mm

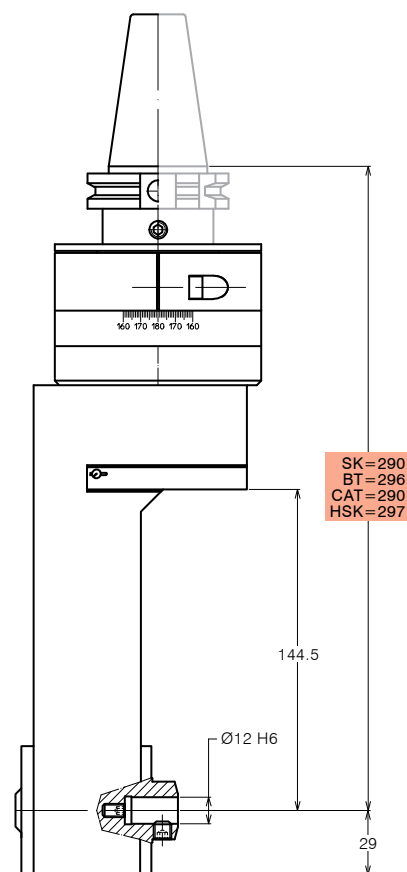
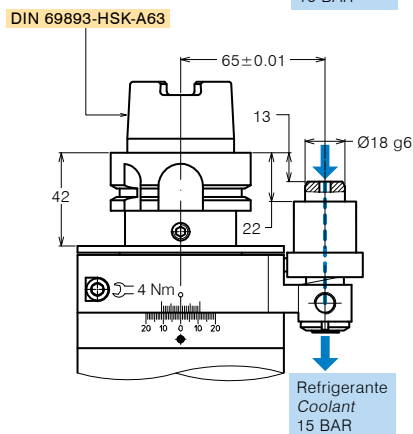
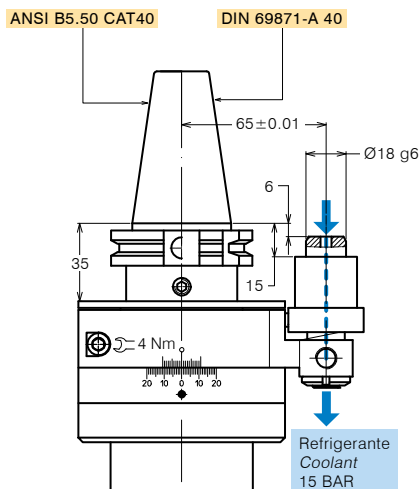
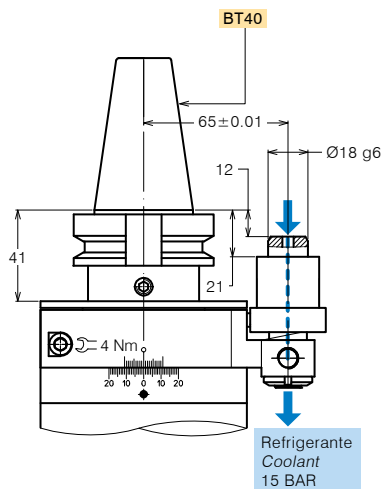
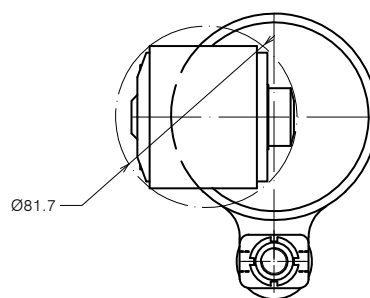
Stop-bar pin pitch 80 mm

DOTAZIONE STANDARD STANDARD EQUIPMENT

Stop-block standard *Standard stop-block* 311201.025

Tubetto di grasso *Grease tube*

Bauletto *Storage case*





TESTE ANGOLARI DISASSATE OFF-SET ANGLE HEADS

FORATURA
DRILLING



MASCHIATURA
TAPPING



SPECIFICHE TECNICHE TECHNICAL FEATURES

Modello *Type* AO25-SK40-S195 Codice *Code* 1249159.100

Modello *Type* AO25-BT40-S201 Codice *Code* 1249160.100

Modello *Type* AO25-CAT40-S195 Codice *Code* 1249161.100

Modello *Type* AO25-HSK63-S202 Codice *Code* 1249162.100

Mandrino porta-utensile per pinza	<i>Tool-holder for collet</i>	ER 25
Rotazione cono	<i>Input shank rotation</i>	SX / LH
Rotazione mandrino	<i>Output spindle rotation</i>	DX / RH
Rapporto di trasmissione	<i>Transmission ratio</i>	1:1
Velocità max	<i>Max speed</i>	6000 rpm
Coppia	<i>Torque</i>	23 Nm @ 500 rpm
Carico assiale max	<i>Max axial load</i>	230 N
Peso	<i>Weight</i>	6.5 Kg
Lubrificazione a grasso	<i>Grease lubricated</i>	Klüber Isoflex NBU 15

OPZIONI OPTIONS

Pinza ER25 DIN 6499/B *ER25 collet DIN 6499/B* 411225.100

Pinza di maschiatura ET-1-25 con compensazione *Tapping collet ET-1-25 with compensation* 401225.200

Pinza di maschiatura ER25 con quadro *Tapping collet ER25 with square* 411225.200

Mandrino Weldon *Weldon spindle type*

Mandrino ABS licenza Komet® *ABS license Komet® spindle type*

Mandrino DIN 69893-HSK *DIN 69893-HSK spindle type*

Perno antirotante interasse 80 mm *Stop-bar pin pitch 80 mm*

DOTAZIONE STANDARD STANDARD EQUIPMENT

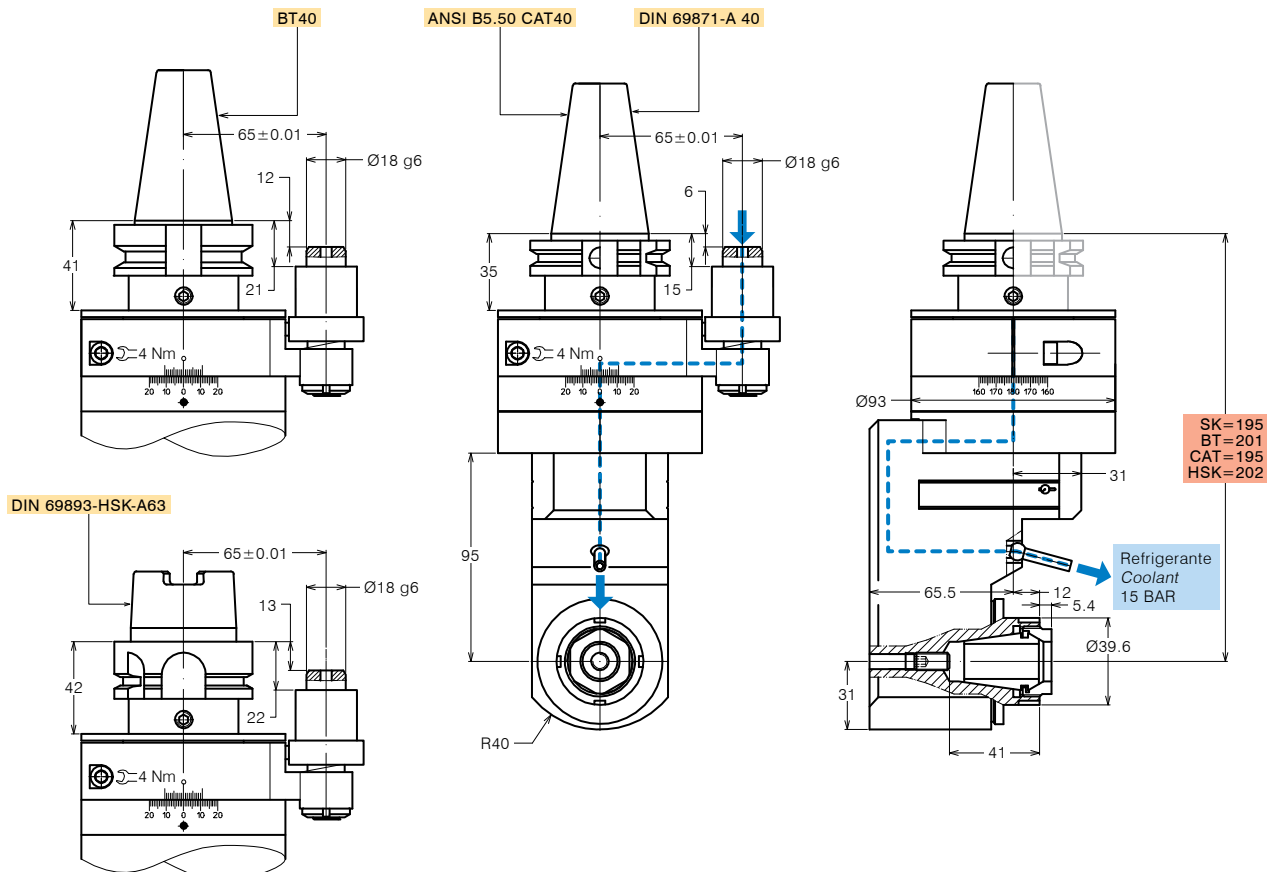
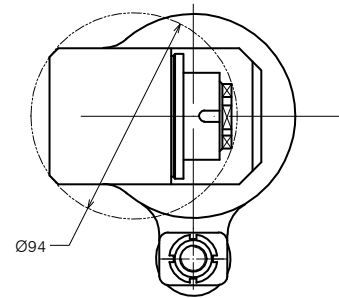
Stop-block standard *Standard stop-block* 311201.025

Ghiera ER *ER nut*

Chiave *Clamping wrench*

Tubetto di grasso *Grease tube*

Bauletto *Storage case*





TESTE ANGOLARI DISASSATE OFF-SET ANGLE HEADS

FORATURA
DRILLING



MASCHIATURA
TAPPING



SPECIFICHE TECNICHE TECHNICAL FEATURES

Modello *Type* AO25R-SK40-S195 Codice *Code* 1249163.100

Modello *Type* AO25R-BT40-S201 Codice *Code* 1249164.100

Modello *Type* AO25R-CAT40-S195 Codice *Code* 1249165.100

Modello *Type* AO25R-HSK63-S202 Codice *Code* 1249166.100

Mandrino porta-utensile per pinza *Tool-holder for collet* **ER 25**

Rotazione cono *Input shank rotation* SX / LH

Rotazione mandrino *Output spindle rotation* DX / RH

Rapporto di trasmissione *Transmission ratio* 1:1

Velocità max *Max speed* 6000 rpm

Coppia *Torque* 23 Nm @ 500 rpm

Carico assiale max *Max axial load* 230 N

Peso *Weight* 6.5 Kg

Lubrificazione a grasso *Grease lubricated* Klüber Isoflex NBU 15

OPZIONI OPTIONS

Pinza ER25 DIN 6499/B *ER25 collet DIN 6499/B* 411225.100

Pinza di maschiatura ET-1-25 con compensazione *Tapping collet ET-1-25 with compensation* 401225.200

Pinza di maschiatura ER25 con quadro *Tapping collet ER25 with square* 411225.200

Mandrino Weldon *Weldon spindle type*

Mandrino ABS licenza Komet® *ABS license Komet® spindle type*

Mandrino DIN 69893-HSK *DIN 69893-HSK spindle type*

Perno antirotante interasse 80 mm *Stop-bar pin pitch 80 mm*

DOTAZIONE STANDARD STANDARD EQUIPMENT

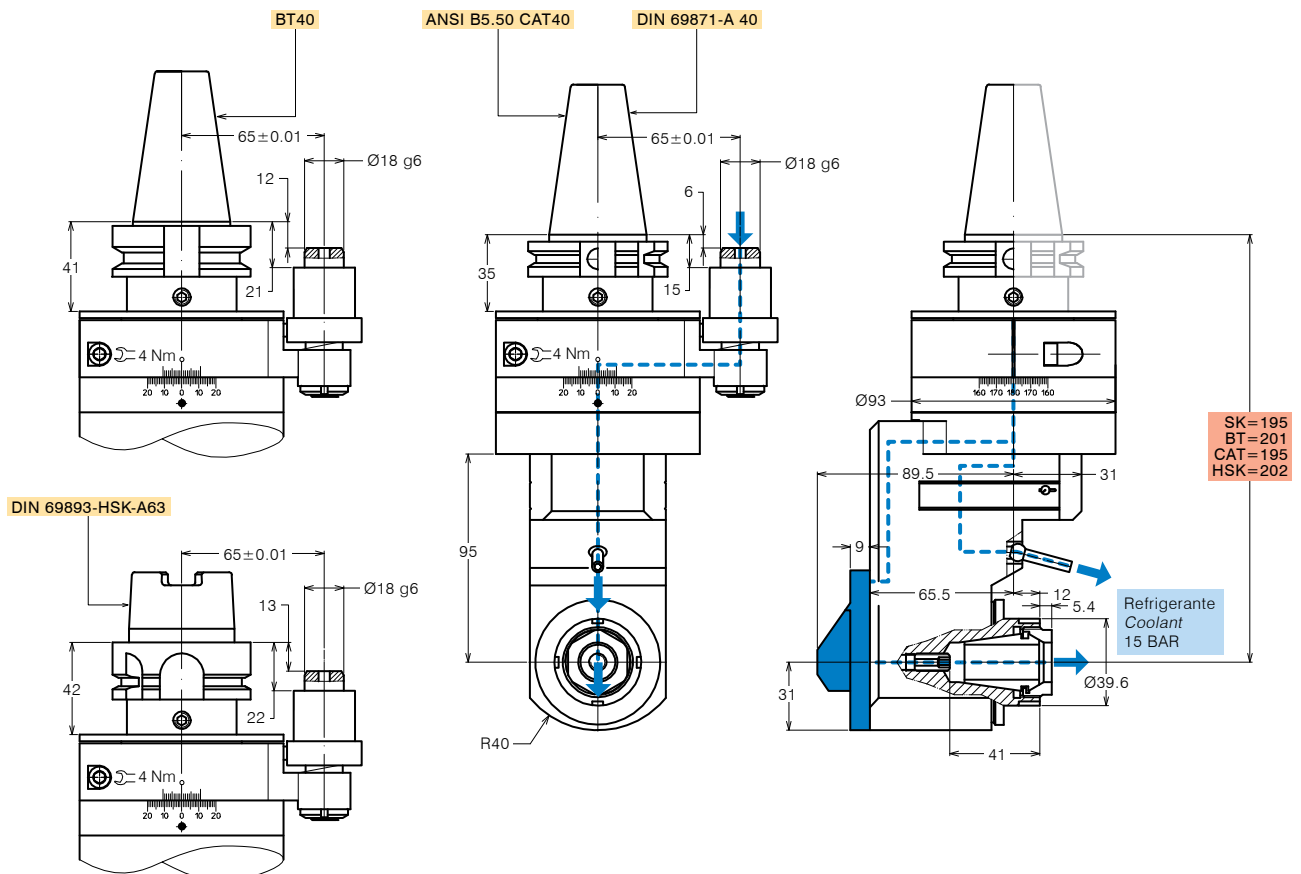
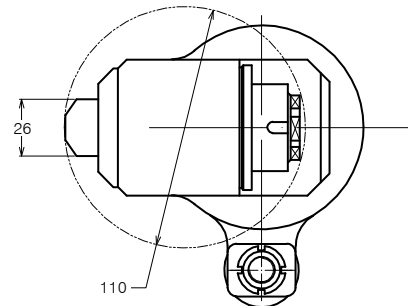
Stop-block standard *Standard stop-block* 311201.025

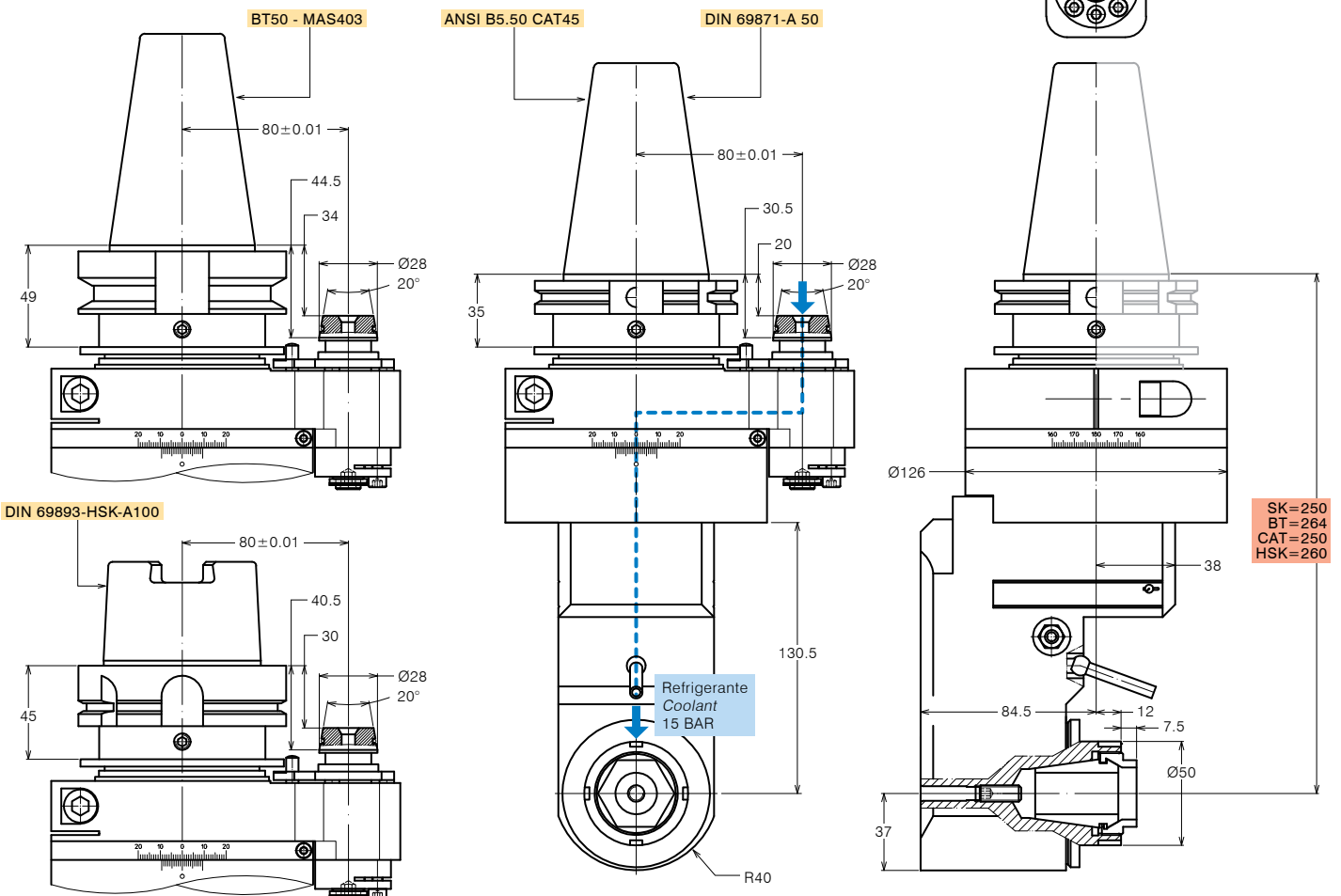
Ghiera ER *ER nut*

Chiave *Clamping wrench*

Tubetto di grasso *Grease tube*

Bauletto *Storage case*







TESTE ANGOLARI DISASSATE OFF-SET ANGLE HEADS

FORATURA
DRILLING



MASCHIATURA
TAPPING



REFRIGERANTE
COOLANT

IC

SPECIFICHE TECNICHE TECHNICAL FEATURES

Modello *Type* AO32R-SK50 Codice *Code* 1249116.100

Modello *Type* AO32R-BT50 Codice *Code* 1249117.100

Modello *Type* AO32R-CAT50 Codice *Code* 1249118.100

Modello *Type* AO32R-HSK100 Codice *Code* 1249119.100

Mandrino porta-utensile per pinza *Tool-holder for collet* **ER 32**

Rotazione cono *Input shank rotation* SX / LH

Rotazione mandrino *Output spindle rotation* DX / RH

Rapporto di trasmissione *Transmission ratio* 1:1

Velocità max *Max speed* 5000 rpm

Coppia *Torque* 70 Nm

Carico assiale max *Max axial load* 420 N

Peso *Weight* 13 Kg

Lubrificazione a grasso *Grease lubricated* Klüber Isoflex NBU 15

OPZIONI OPTIONS

Pinza ER32 DIN 6499/B *ER32 collet DIN 6499/B* 411232.100

Pinza di maschiatura ET-1-32 con compensazione 401232.200

Tapping collet ET-1-32 with compensation

Pinza di maschiatura ER32 con quadro 411232.200

Tapping collet ER32 with square

Mandrino Weldon *Weldon spindle type*

Mandrino ABS licenza Komet®

ABS license Komet® spindle type

Mandrino DIN 69893-HSK

DIN 69893-HSK spindle type

Perno antirotante interasse 110 mm

Stop-bar pin pitch 110 mm

DOTAZIONE STANDARD STANDARD EQUIPMENT

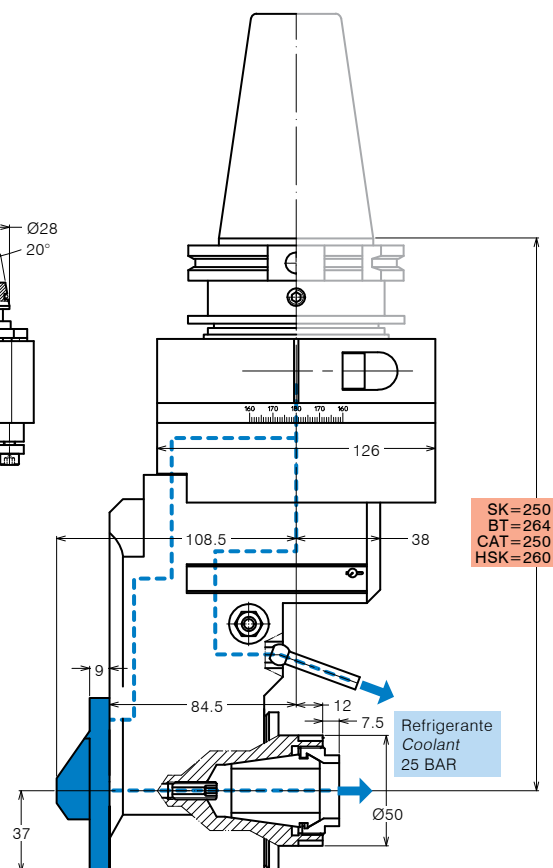
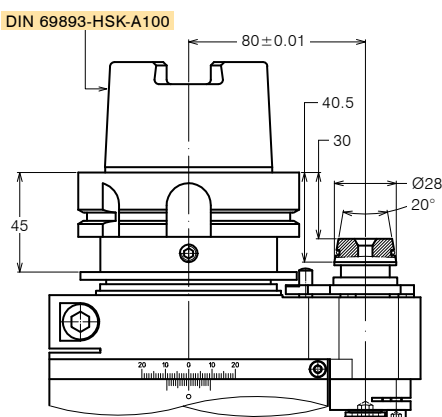
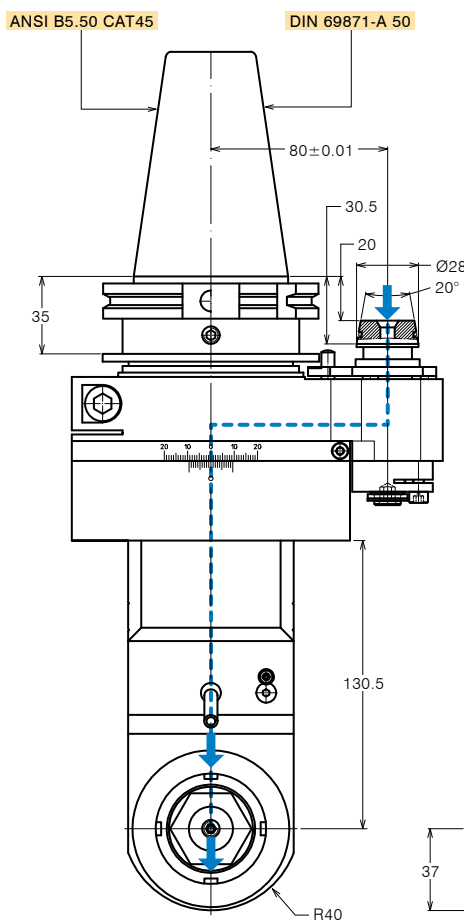
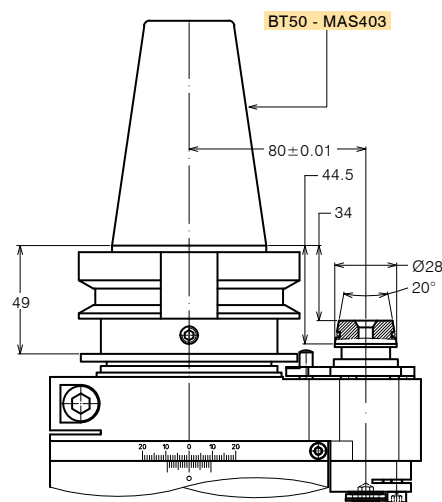
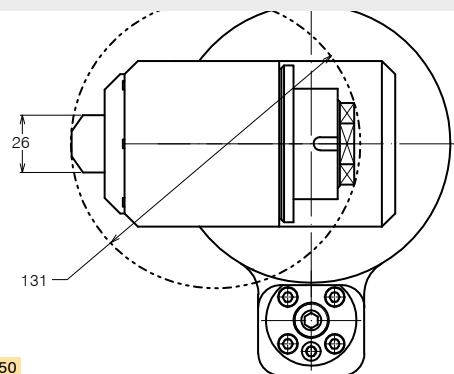
Stop-block standard *Standard stop-block* 311201.026

Ghiera ER *ER nut*

Chiave *Clamping wrench*

Tubetto di grasso *Grease tube*

Bauletto *Storage case*



SK=250
BT=264
CAT=250
HSK=260



TESTE ANGOLARI DISASSATE OFF-SET ANGLE HEADS

SPECIFICHE TECNICHE TECHNICAL FEATURES

Modello *Type* AO27-SK50 Codice *Code* 124501.100

Modello *Type* AO27-BT50 Codice *Code* 124502.100

Modello *Type* AO27-CAT50 Codice *Code* 124503.100

Modello *Type* AO27-HSK100 Codice *Code* 124504.100

Albero porta-fresa <i>Mill arbor</i>	DIN 6358 Ø27
Rotazione cono <i>Input shank rotation</i>	DX / RH
Rotazione mandrino <i>Output spindle rotation</i>	DX / RH
Rapporto di trasmissione <i>Transmission ratio</i>	1:1
Velocità max <i>Max speed</i>	3500 rpm
Peso <i>Weight</i>	14 Kg
Lubrificazione a grasso <i>Grease lubricated</i>	Klüber Isoflex NBU 15

OPZIONI OPTIONS

Mandrino Weldon *Weldon spindle type*

Perno antirotante interasse 110 mm

Stop-bar pin pitch 110 mm

DOTAZIONE STANDARD STANDARD EQUIPMENT

Stop-block standard *Standard stop-block* 311201.026

Tubetto di grasso *Grease tube*

Bauletto *Storage case*

