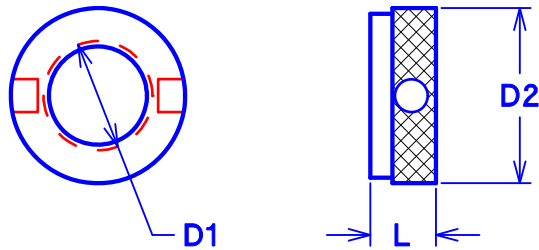


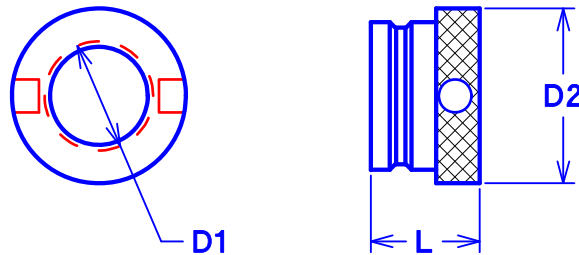
GHIERE NUTS

GHIERE DIN 6327 / DIN 6327 Nuts



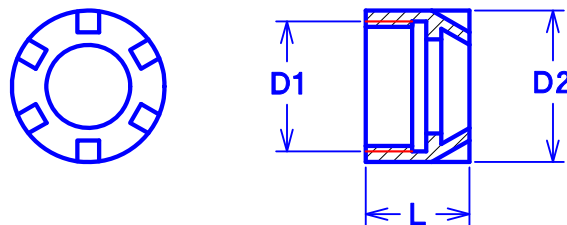
| Codice Code | D1 | D2 | L |
|----------------|----------|------|----|
| 414308-000 | Tr8x1 | 14,8 | 5 |
| 414310-000 | Tr10x1,5 | 17,8 | 6 |
| 414312-000 | Tr12x1,5 | 19,7 | 6 |
| 414316-000 | Tr16x1,5 | 24,6 | 12 |
| 414320-000 | Tr20x2 | 31,6 | 12 |
| 414328-000 | Tr28x2 | 39,6 | 12 |

GHIERE DIN 6327 PER MANICOTTI A CAMBIO RAPIDO / DIN 6327 Nuts for Quick Change Sleeves



| Codice Code | Codice Manicotto Sleeve Code | D1 | D2 | L |
|----------------|---------------------------------|----------|----|------|
| 414416-000 | 1 | Tr16x1,5 | 26 | 18,5 |
| 414420-000 | 1 | Tr20x2 | 33 | 20 |
| 414428-000 | 2 | Tr28x2 | 42 | 22 |

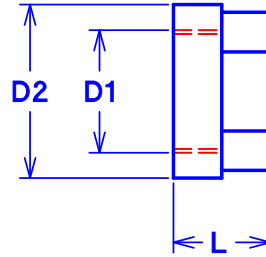
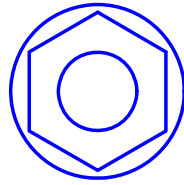
GHIERE MINI / Mini Nuts



| Codice Code | Codice Pinza Collet Code | Codice Chiave Wrench Code | D1 | D2 | L |
|----------------|-----------------------------|------------------------------|----------|----|----|
| 414510-008 | 411208-100 | 410208-000 | M10x0,75 | 12 | 11 |
| 414513-011 | 411211-100 | 410211-000 | M13x0,75 | 16 | 11 |
| 414519-016 | 411216-100 | 410216-000 | M19x1 | 22 | 17 |
| 414524-020 | 411220-100 | 410220-000 | M24x1 | 28 | 19 |
| 414530-025 | 411225-100 | 410225-000 | M30x1 | 35 | 20 |

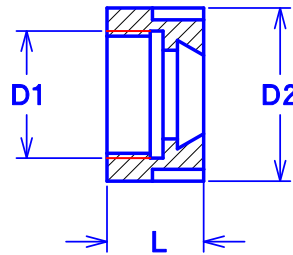
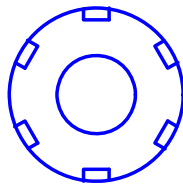
GHIERE e MANICOTTI A CAMBIO RAPIDO
NUTS and QUICK CHANGE SLEEVES

GHIERE per PINZE ER / Nuts for ER Collet



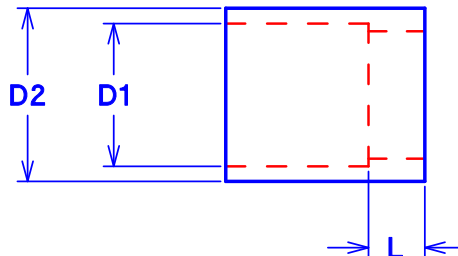
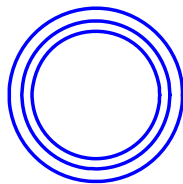
| Codice Code | Codice Pinza Collet Code | D1 | D2 | L |
|-------------|--------------------------|----------|----|----|
| 414614-011 | 411211-100 | M14x0,75 | 19 | 11 |
| 414622-016 | 411216-100 | M22x1,5 | 28 | 17 |
| 414625-020 | 411220-100 | M25x1,5 | 34 | 19 |

GHIERE per PINZE ER / Nuts for ER Collet



| Codice Code | Codice Pinza Collet Code | Codice Chiave Wrench Code | D1 | D2 | L |
|-------------|--------------------------|---------------------------|---------|----|----|
| 414822-016 | 411216-100 | 410316-000 | M22x1,5 | 28 | 17 |
| 414825-020 | 411220-100 | 410320-000 | M25x1,5 | 34 | 19 |
| 414832-025 | 411225-100 | 410325-000 | M32x1,5 | 42 | 20 |
| 414840-032 | 411232-100 | 410332-000 | M40x1,5 | 50 | 22 |

MANICOTTI A CAMBIO RAPIDO (Tipo Corto) / Quick Change Sleeves (Short Pattern)



| Codice Code | Per Mandrini DIN 55058 For DIN 55058 Spindles | D1 | D2 | L |
|-------------|---|------|----|-----|
| 402922-016 | Ø 16 | 22 | 27 | 9,5 |
| 402928-020 | Ø 20 | 28 | 34 | 11 |
| 402937-028 | Ø 28 | 34,5 | 41 | 12 |