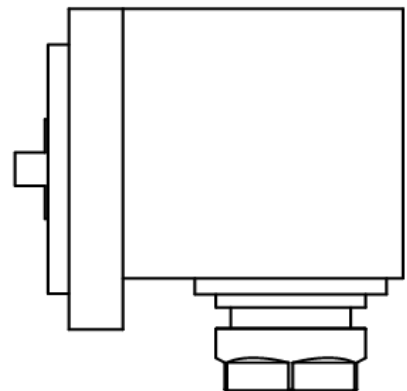
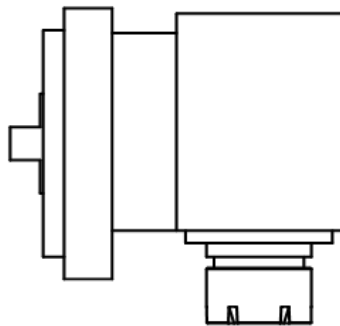
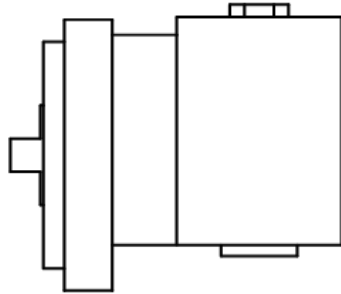
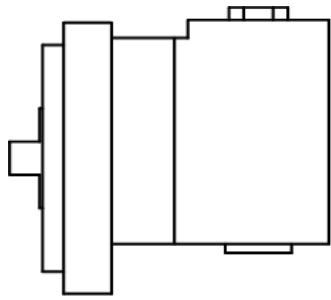




TESTE ANGOLARI A 90° PER UNITA' – PINZA ER  
90° ANGLE HEADS FOR UNIT - ER COLLET



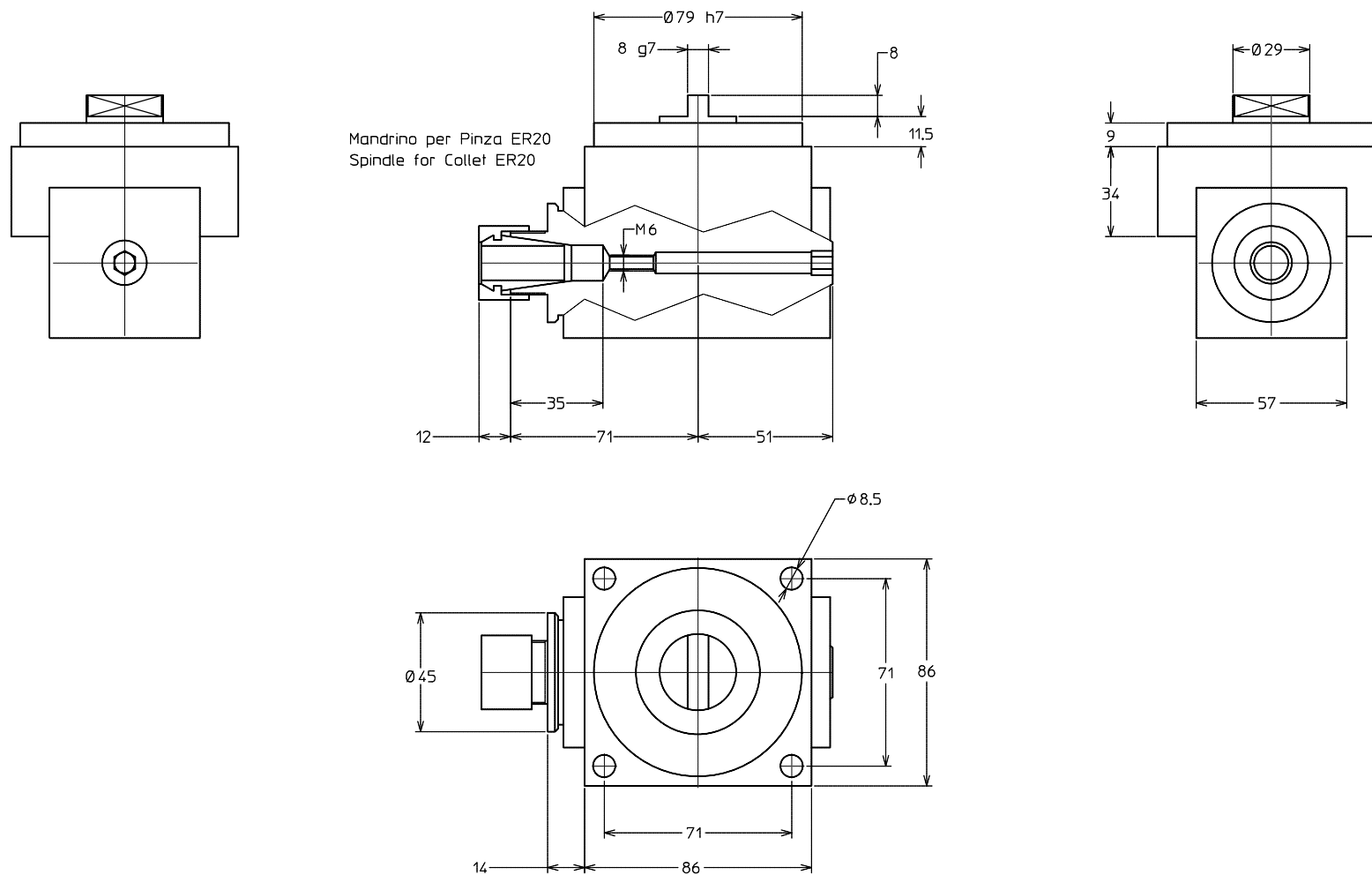
#### CARATTERISTICHE TECNICHE *TECHNICAL FEATURES*

**Velocità fino a 5000 RPM** *Speed up to 5000 RPM*

**Capacità di bloccaggio utensile fino a diametro 20** *Clamping capacity up to diameter 20*

**Teste applicabili su unità tramite interfaccia** *Heads to be used on unit by hardware*

**Lubrificate a grasso** *Grease lubricated*



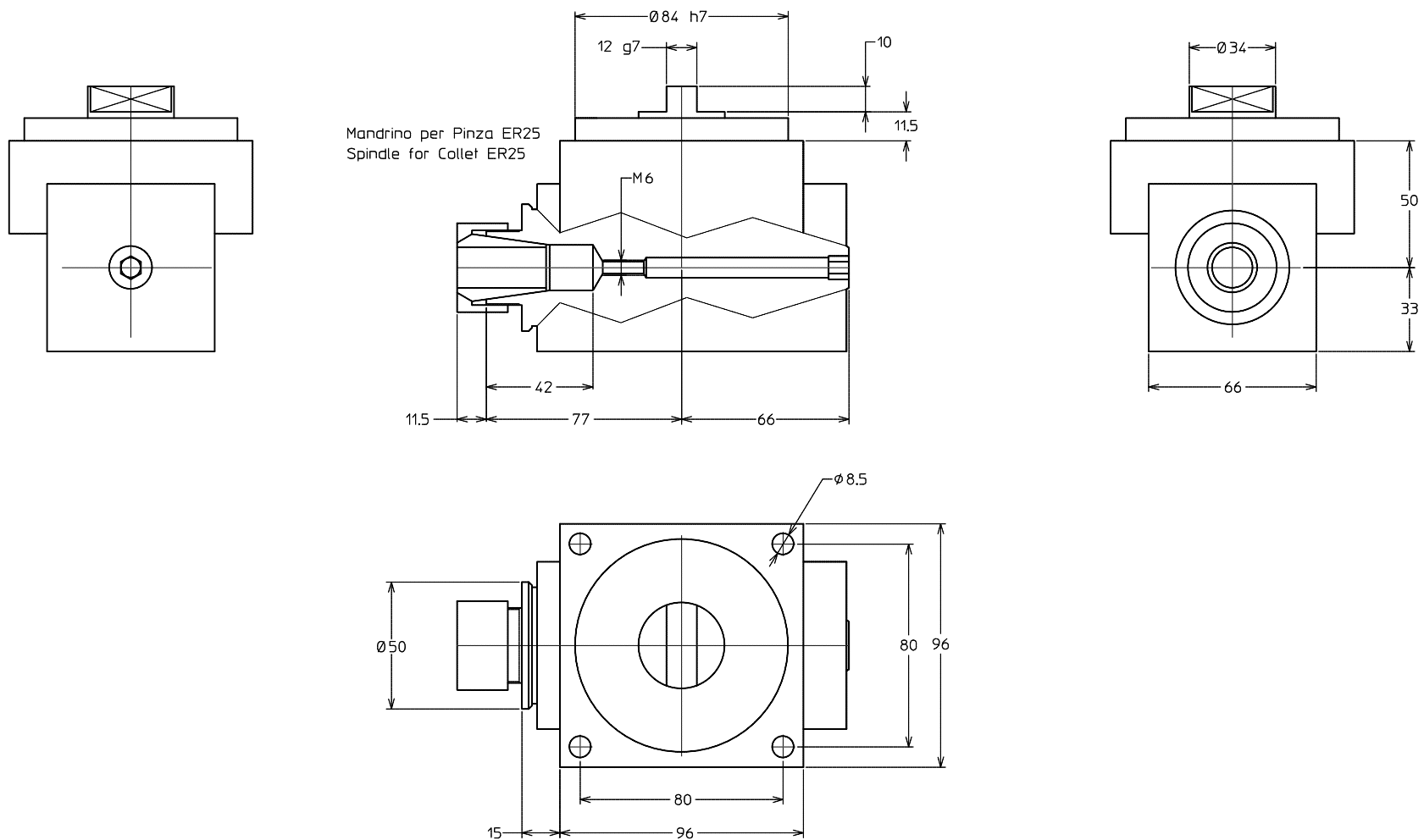
## TESTA ANGOLARE TIPO A20 / ANGLE HEAD TYPE A20

### SPECIFICHE TECNICHE / TECHNICAL SPECIFICATION

Modello / Type	A20
Codice / Code	114901.100
Mandrino per pinza / Spindle for collet	ER 25
Rotazione presa di forza / Main drive rotation	DX / RH
Rotazione mandrino / Spindle rotation	DX / RH
Rapporto di trasmissione / Transmission ratio	1:1
Velocità max / Max speed	3000 RPM
Peso / Weight	2.4 kg

### ACCESSORI / ACCESSORIES

Chiave / Wrench	410220.000
Pinza / Collet	411220.100



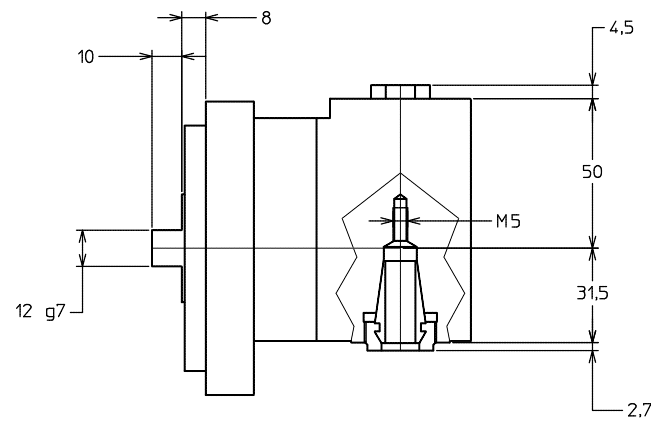
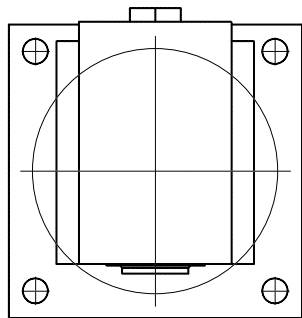
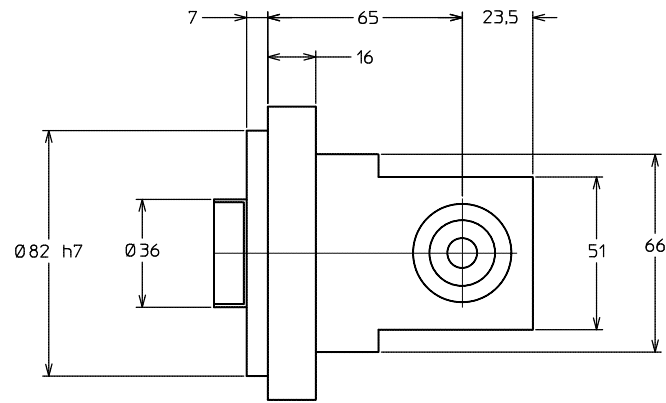
## TESTA ANGOLARE TIPO A25 / ANGLE HEAD TYPE A25

### SPECIFICHE TECNICHE / TECHNICAL SPECIFICATION

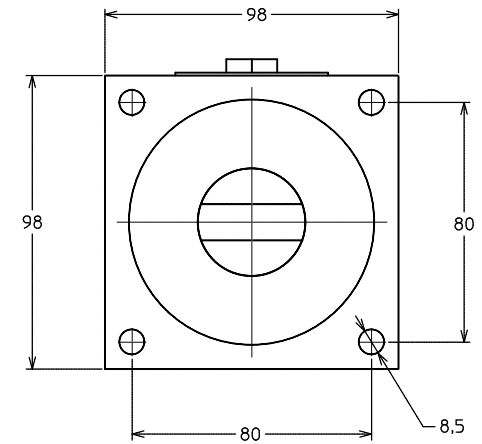
Modello / Type	A25	114902.100
Codice / Code	ER 25	
Mandrino per pinza / Spindle for collet	DX / RH	
Rotazione presa di forza / Main drive rotation	DX / RH	
Rotazione mandrino / Spindle rotation	1:1	
Rapporto di trasmissione / Transmission ratio	2400 RPM	
Velocità max / Max speed	3 kg	
Peso / Weight		

### ACCESSORI / ACCESSORIES

Chiave / Wrench	410225.000
Pinza / Collet	411225.100



Mandrino per pinza ER 16  
Spindle for collet ER 16



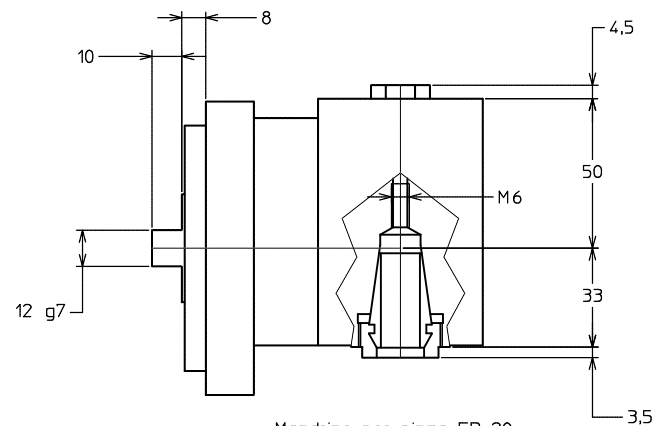
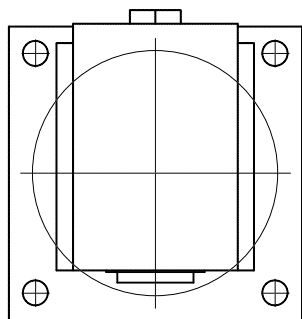
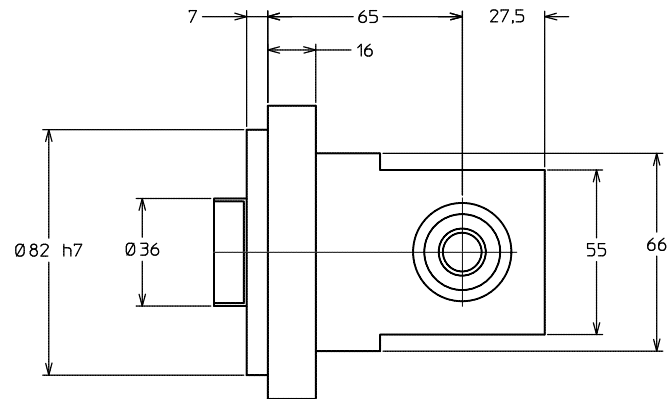
### TESTA ANGOLARE TIPO A16/N / ANGLE HEAD TYPE A16/N

#### SPECIFICHE TECNICHE / TECHNICAL SPECIFICATION

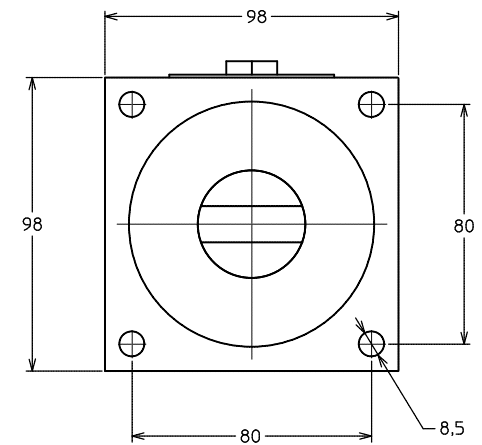
Modello / Type	A16/N
Codice / Code	114903.100
Mandrino per pinza / Spindle for collet	ER 16
Rotazione presa di forza / Main drive rotation	SX / LH
Rotazione mandrino / Spindle rotation	DX / RH
Rapporto di trasmissione / Transmission ratio	1:1
Velocità max / Max speed	5000 RPM
Peso / Weight	

#### ACCESSORI / ACCESSORIES

Chiave / Wrench	410416.000
Pinza / Collet	411216.100



Mandrino per pinza ER 20  
Spindle for collet ER 20



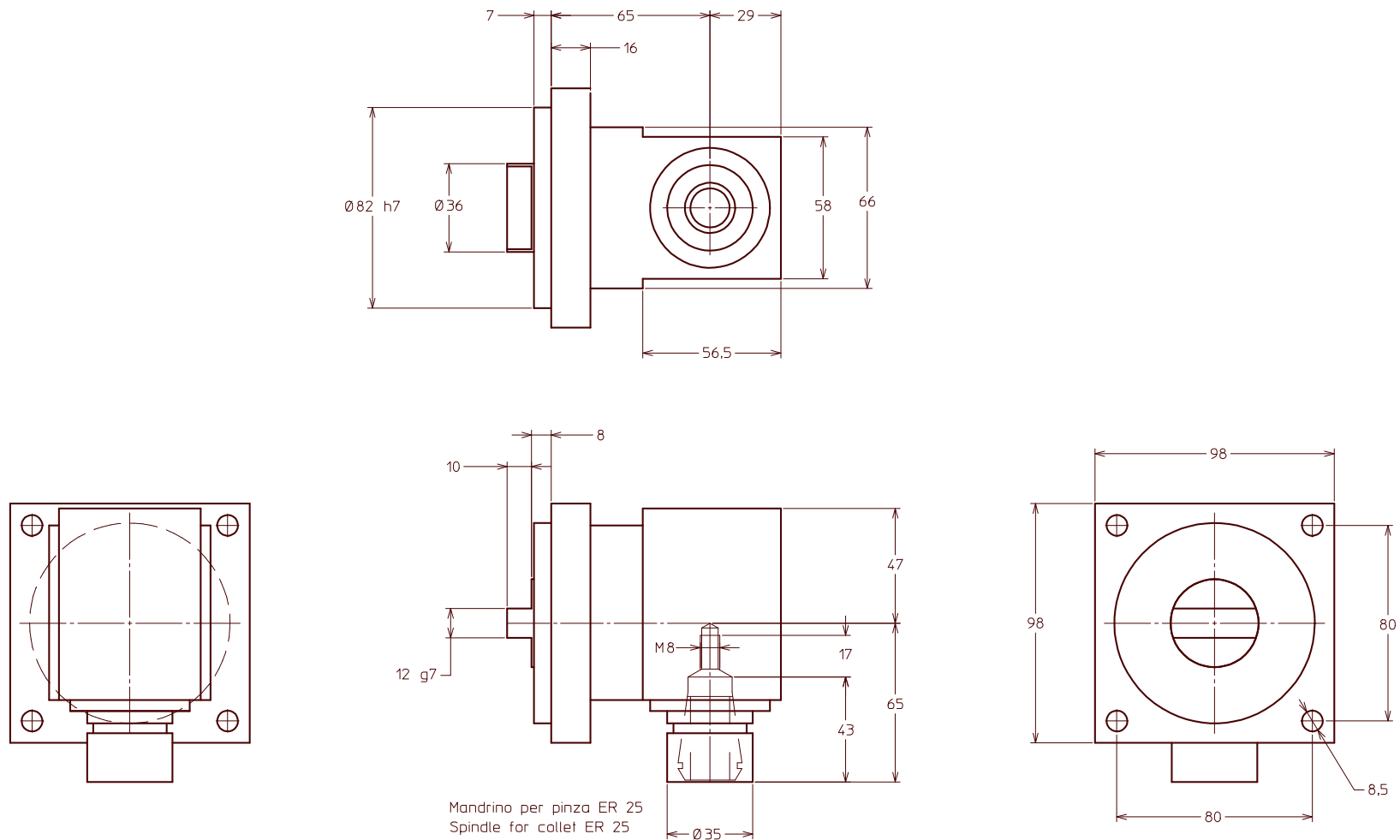
### TESTA ANGOLARE TIPO A20/N / ANGLE HEAD TYPE A20/N

#### SPECIFICHE TECNICHE / TECHNICAL SPECIFICATION

Modello / Type	A20/N
Codice / Code	114904.100
Mandrino per pinza / Spindle for collet	ER 20
Rotazione presa di forza / Main drive rotation	SX / LH
Rotazione mandrino / Spindle rotation	DX / RH
Rapporto di trasmissione / Transmission ratio	1:1
Velocità max / Max speed	5000 RPM
Peso / Weight	

#### ACCESSORI / ACCESSORIES

Chiave / Wrench	410420.000
Pinza / Collet	411220.100



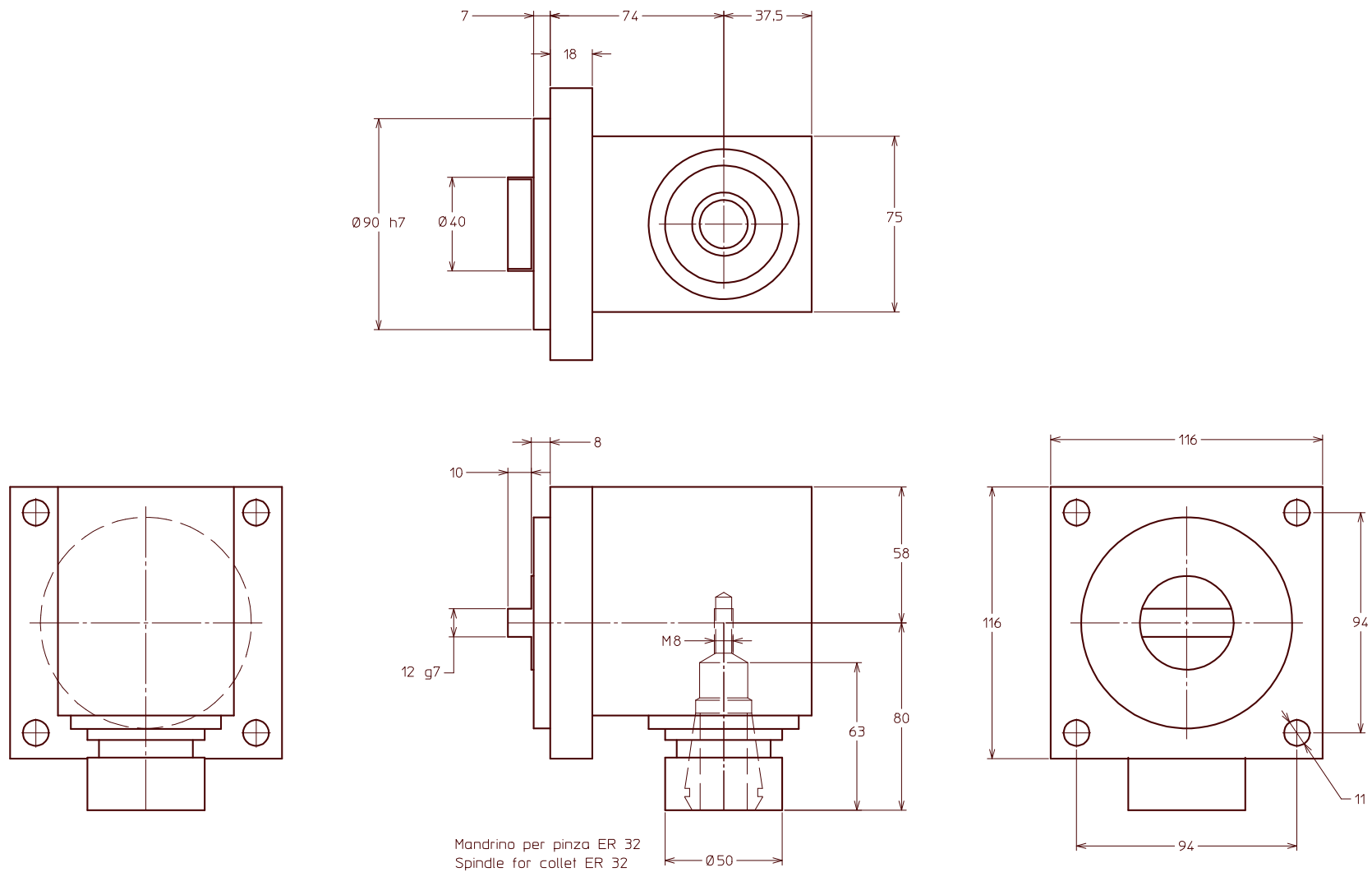
### TESTA ANGOLARE TIPO A25/N / ANGLE HEAD TYPE A25/N

#### SPECIFICHE TECNICHE / TECHNICAL SPECIFICATION

Modello / Type	A25/N
Codice / Code	114905.100
Mandrino per pinza / Spindle for collet	ER 25
Rotazione presa di forza / Main drive rotation	SX / LH
Rotazione mandrino / Spindle rotation	DX / RH
Rapporto di trasmissione / Transmission ratio	1:1
Velocità max / Max speed	4000 RPM
Peso / Weight	

#### ACCESSORI / ACCESSORIES

Chiave / Wrench	410225.000
Pinza / Collet	411225.100
Flangia di collegamento / Quill clamp	
Trascinatore / Driver	
Giunto / Joint	



### TESTA ANGOLARE TIPO A32/N / ANGLE HEAD TYPE A32/N

#### SPECIFICHE TECNICHE / TECHNICAL SPECIFICATION

Modello / Type	A32/N
Codice / Code	114906.100
Mandrino per pinza / Spindle for collet	ER 32
Rotazione presa di forza / Main drive rotation	SX / LH
Rotazione mandrino / Spindle rotation	DX / RH
Rapporto di trasmissione / Transmission ratio	1:1
Velocità max / Max speed	3000 RPM
Peso / Weight	

#### ACCESSORI / ACCESSORIES

Chiave / Wrench	410332.000
Pinza / Collet	411232.100
Flangia di collegamento / Quill clamp	
Trascinatore / Driver	
Giunto / Joint	