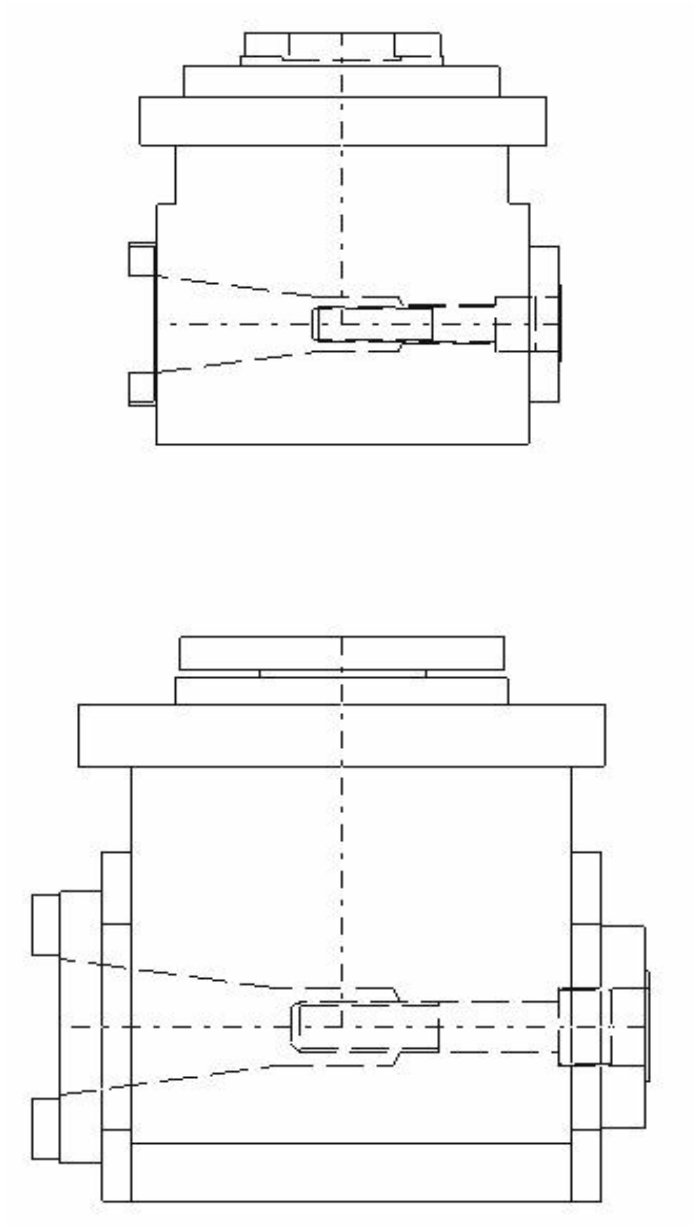


**TESTE ANGOLARI DI FRESATURA**  
*ANGLE MILLING HEAD*



**CARATTERISTICHE TECNICHE** *TECHNICAL FEATURES*

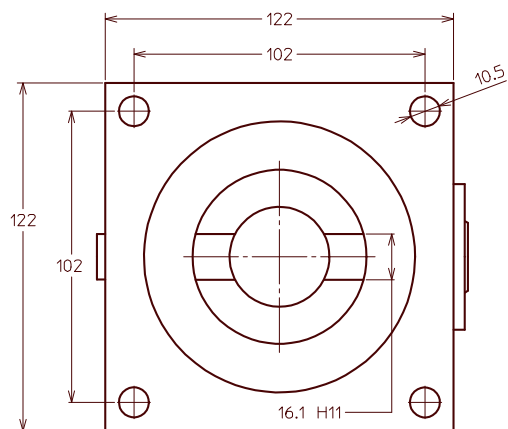
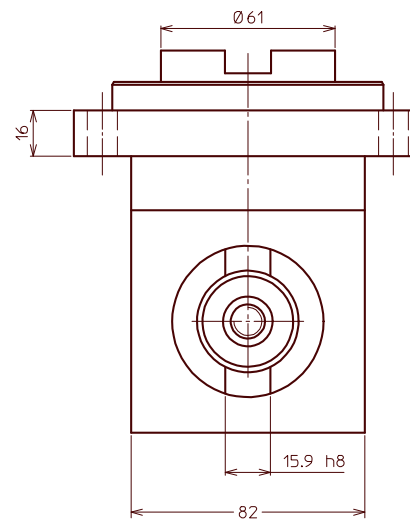
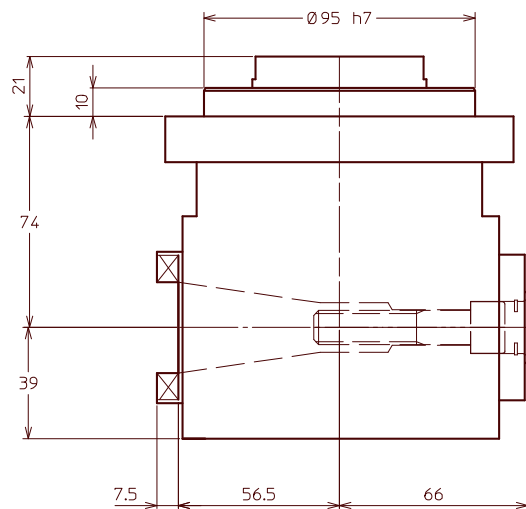
**Velocità fino a 3000 RPM** *Speed up to 3000 RPM*

**Mandrino ISO 30-40** *ISO 30-40 spindle*

**Testa applicabile su Unità e Fresatrici tramite Interfaccia**

*Heads to be used on Unit and Milling machine by Hardware*

**Lubrificate a grasso** *Greased lubricated*



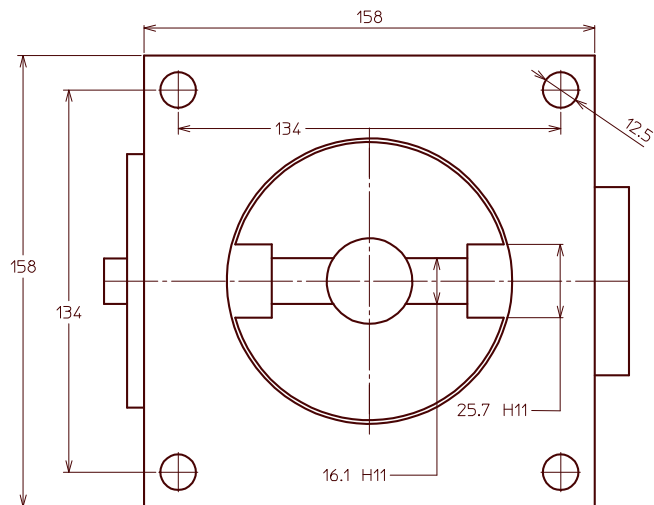
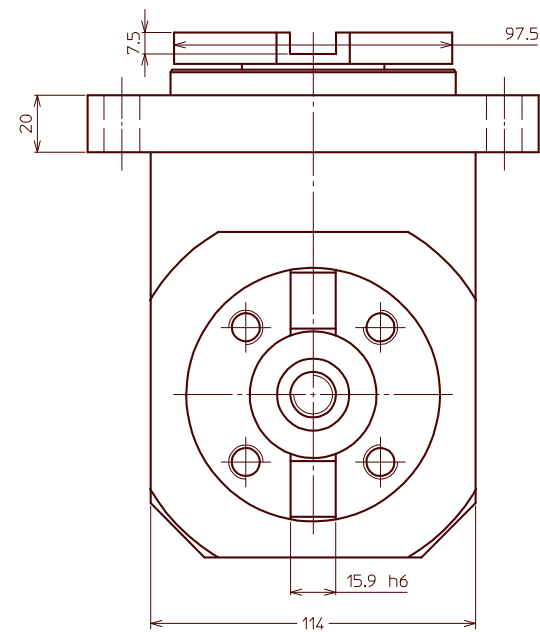
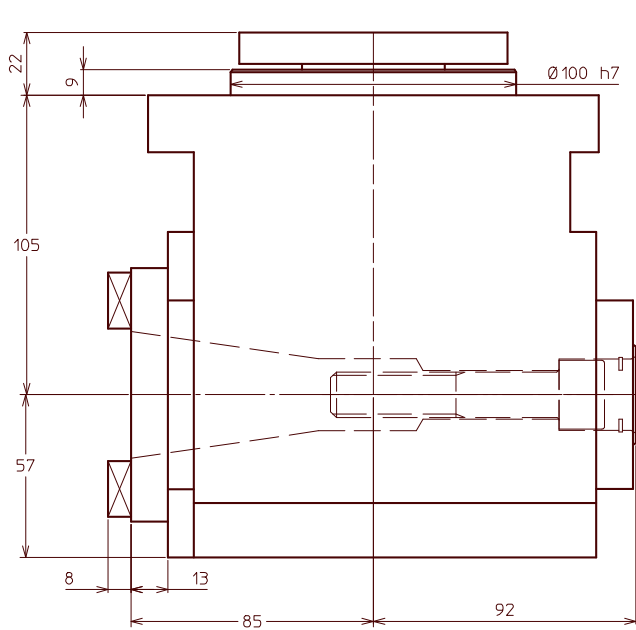
## TESTA ANGOLARE A 90° DI FRESATURA TIPO A-ISO30 / 90° ANGLE MILLING HEAD TYPE A-ISO30

### SPECIFICHE TECNICHE / TECHNICAL SPECIFICATION

|   |            |
|---|------------|
| Modello / Type                                | A-ISO30    |
| Codice / Code                                 | 134701.100 |
| Mandrino / Spindle                            | ISO 30     |
| Potenza max. / Max power Kw                   | 4          |
| Rapporto di trasmissione / Transmission ratio | 1:1        |
| Rotaz. presa di forza / Main drive rotation   | SX         |
| Rotaz. mandrino / Spindle rotation            | DX         |
| Velocità max / Max speed                      | 3000 RPM   |
| Peso / Weight                                 | 9 Kg       |

### ACCESSORI / ACCESSORIES

|                                       |
|---------------------------------------|
| Flangia di collegamento / Quill clamp |
| Giunto / Joint                        |



## TESTA ANGOLARE A 90° DI FRESATURA TIPO A-ISO40 / 90° ANGLE MILLING HEAD TYPE A-ISO40

### SPECIFICHE TECNICHE / TECHNICAL SPECIFICATION

|   |             |
|---|-------------|
| Modello / Type                                | A-ISO40     |
| Codice / Code                                 | 134702.100  |
| Mandrino / Spindle                            | DIN 2079-40 |
| Potenza max. / Max power Kw                   | 8           |
| Rapporto di trasmissione / Transmission ratio | 1.5:1       |
| Rotaz. presa di forza / Main drive rotation   | SX          |
| Rotaz. mandrino / Spindle rotation            | DX          |
| Velocità max / Max speed                      | 3000 RPM    |
| Peso / Weight                                 | 22 Kg       |

### ACCESSORI / ACCESSORIES

Flangia di collegamento / Quill clamp  
Giunto / Joint